

NORTHERN

L I G H T S



**Beltrami Electric
Cooperative Inc.**

® Your Touchstone Energy® Cooperative 

March 2020



Power of 3

Use the app, website or Co-op
Connections Card to save



Touchstone Energy®
Cooperatives

Go Beyond the Card
www.connections.coop

2020 Co-op Connections
discounts and offers – pages 4-5



Northern Lights (USPS 016488), Vol. 67, No. 3

Northern Lights is published monthly by Beltrami Electric Cooperative Inc., 4111 Technology Drive N.W., Bemidji, Minnesota 56619-0488. Subscription rate \$5. Periodicals postage paid at Bemidji, MN 56601.

Postmaster: Please send address corrections to Beltrami Electric Cooperative Inc., P.O. Box 488, Bemidji, Minnesota 56619-0488.

Office Hours: 8 a.m. to 4:30 p.m.
Monday – Friday

Member Service: 218-444-2540
or 1-800-955-6083

www.beltramielectric.com

Board of Directors

Chair	Rick Coe, DISTRICT 6 <i>(Minnkota Director)</i>
Vice Chair	John Lund, DISTRICT 7
Secretary	Murl Nord, DISTRICT 1 <i>(Square Butte Director)</i>
Treasurer	Judy Honer, DISTRICT 9
Directors:	Charlie Perkins, DISTRICT 2; Charles Parson, DISTRICT 3; Craig Gaasvig, DISTRICT 4; Robert Wallner, DISTRICT 5; Sue Kringen, DISTRICT 8
President and CEO	Jared Echternach
Editor	Angela Lyseng

Minnesota State Electrical Inspectors

Beltrami County

Wade Koons

218-255-3011 - wade@koonsinspections.com

Cass and Hubbard Counties

Steve Schauland

218-652-2213 – Fax: 218-333-0451

These are the inspectors covering the area served by Beltrami Electric. They can be reached by phone Monday through Friday between 7 and 8:30 a.m. or by fax or email as indicated.

Gopher State One Call 811
1-800-252-1166 or 811
www.gopherstateonecall.org

Anyone who plans to dig is required by law to notify the state of their intentions at least 48 hours in advance.

All digging requires the 48-hour notification so that buried telephone lines, television cables, pipelines, utility electrical lines, and municipal water and sewer lines can be located to ensure that none will be severed or damaged.

Mission of Beltrami Electric Co-op

To provide excellent value to our members through the safe delivery of reliable electric service, excellent member service and innovative energy solutions at fair and reasonable prices.

This institution is an equal opportunity provider and employer.



The value of electricity

Jared Echternach, *President and CEO*

We often take electricity for granted. It's safe, reliable and affordable, yet we often underestimate the value it brings to our lives every day.

Electricity keeps us connected to our modern world. Consider all the necessities and conveniences we enjoy in part because of the power lines running to the electric meter outside your home.

Count your televisions, desktop, laptop and tablet computers, printers, gaming consoles, music and video players and personal assistant devices. Whether they are used every day or just occasionally, the electricity that keeps them working comes from your cooperative.

Have you looked around your kitchen lately? Between the coffee maker and toaster and the microwave and electric skillet, a lot of us have added several other modern small appliances.

Add to that the garage and workshop. The power tools and machines you use to complete your projects are either plugged in or recharged from the outlets connecting

your household wiring to your cooperative.

You use electricity to run all of these devices, use the stove, heat and air condition your home and draw hot water from the tap, and we still keep the lights on.

Despite all of these additions, average kilowatt-hour use per residential household has decreased, while average bills have remained relatively stable.

When it comes to pure value, electricity is a clear winner, and we're always looking for ways to work with you to make it even more efficient. That's why we promote energy efficiency programs, highlight new and emerging electric technologies and look to electricity as a good choice to reduce your overall energy bill.

Energy performance dashboards, smart thermostats and power strips, and appliance settings that shift most water heating, laundry and dishwashing outside of peak rate periods help reduce the co-op's overall power demand. They also give you opportunities to control or even trim your monthly energy bills.

Who says you can't get anything for \$1?

\$1 of electricity gets you:

 1,680 HOURS of smartphone charging	 840 HOURS of light from an LED lamp	 8 HOURS of coffee brewing
 44 HOURS of shows on an LCD TV		 6 HOURS of microwaving
 120 HOURS of ceiling fan spinning	 138 HOURS on your laptop	

That's good for families, couples and individuals trying to live within their budgets, and it's going to become even more important as digital devices and internet-connected technologies become more prevalent in our lives.

As homes use more and more Wi-Fi-connected devices, members will depend upon their cooperative for more than just the power that keeps the lights on.

That's why we're always working to provide service that's reliable, keep it affordable and make it even more valuable to you, our member.

Annual and district meetings

Your board of directors has set the annual meeting date and location. This year will be the 80th anniversary of

your cooperative, and our celebration/annual meeting will be held on Wednesday, Aug. 12, at the Beltrami County Fairgrounds in conjunction with the Beltrami County Fair.

One of your cooperative's strategic initiatives is to increase positive member engagement, and what better place to engage our members than at the county fair? We are delighted to partner with the Beltrami County Fair board to host our annual meeting. Please mark your calendars for Wednesday, Aug. 12, and we hope to see you at the fair!

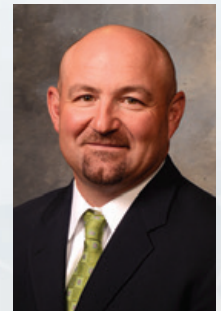
As a result of the later annual meeting date, your cooperative will hold three district meetings in June, at which candidates may be nominated to serve on the board. Seats in District

2, currently served by Charlie Perkins; District 4, currently served by Craig Gaasvig; and District 6, currently served by Rick Coe, are up for election this year. With last year's bylaw change, candidates interested in running for the board must complete and submit to the cooperative a candidate packet no later than five days prior to the district meeting in which the candidate seeks to run. Please see the district meeting schedule on page 8 for meeting locations, dates and times. If you are interested in learning more about serving on the cooperative board, please feel free to contact me or visit our website at www.beltramielectric.com.



Cold shows need for Project Tundra

MAC MCLENNAN, PRESIDENT & CEO OF MINNKOTA POWER COOPERATIVE



When temperatures across the region dropped to 30 below zero in mid-January, most of us hurried indoors, turned up the heat and flipped on our computers and TVs for entertainment. There likely wasn't a second thought as to where the electricity powering our region was coming from during those bitterly cold days.

As demand for electricity increased, there were stretches when almost all of the Upper Midwest's energy came from a combination of coal, natural gas and nuclear. This is not a new phenomenon. Routinely, subzero temperatures can limit the ability for wind and solar to produce energy for homes and businesses when they need it most.

For Minnkota Power Cooperative and its member

cooperatives in eastern North Dakota and northwest Minnesota, coal was the primary reason the lights (and everything else) stayed on.

Coal is a low-cost and reliable resource, but it is challenged in today's world as society focuses on making significant reductions in carbon dioxide emissions. That's why Minnkota is pursuing Project Tundra – a major initiative to build the world's largest carbon capture facility right here in North Dakota.

The project aims to transform our largest coal unit into a near-zero carbon emissions resource using state-of-the-art technology. The CO₂ removed by Project Tundra would be returned to the land it came from. Directly under the coal mine that provides fuel to the power plant, there is a deep geologic rock formation more than one mile below the surface to safely store the CO₂. If we're successful,

we will remove an amount of CO₂ equivalent to permanently taking 600,000 gasoline-fueled vehicles off the road. More importantly, Project Tundra could be used as a blueprint by utilities in the United States and countries around the world who plan to continue using coal as a resource. The project is currently in the advanced engineering and design phase, with a goal to begin construction within the next few years.

Our nation is striving toward a cleaner electric grid, but that doesn't mean we have to shut down all fossil fuel generators and depend solely on wind and solar facilities. In our region, that simply won't work. The stakes are too high. When it's 30 below zero, we need electricity so reliable that we don't have to think twice about it.



2020 CO-OP CONNECTIONS® participating local businesses and discounts/offers



Alpine Sleeper Fish Houses

10% off Tuesdays and Wednesdays
35241 Hwy 72 NE, Northome
(218) 647-8379 or toll-free 888-921-5222
www.royalshooksmotel.com

A Stitch in Time

\$5 off any sewing or vacuum service
200 Paul Bunyan Dr S, Suite #2
(218) 444-7727
www.sewbemidji.com

Balsam Beach Resort & RV Park

5% off a daily pontoon rental
51155 219th Ave, Bemidji
(218) 751-5057
www.balsambeachresort.com

Beltrami County Historical Society

\$1.00 off Adult admission, up to 4 adults, single visit only (not valid with other offers)
130 Minnesota Ave SW, Bemidji
(218) 444-3376
www.beltramihistory.org

Bemidji Best Auto Service

10% off labor (\$400 max)
1006 Washington Ave S, Bemidji
(218) 333-0933
www.bemidjibest.com

Bemidji Communications

20% off labor
211 Minnesota Ave NW, Bemidji
(218) 444-3389
www.bemcom.com

Bemidji Woolen Mills

10% off total purchase
301 Irvine Ave NW, Bemidji
(218) 751-5166
www.bemidjiwoolenmills.com

Big Apple Bagels

10% off regularly priced menu items
1710 Paul Bunyan Dr NW, Bemidji
(218) 444-7840
www.bigapplebagels.com/bemidjimn

B'z Floral & Gift

10% off gift items (excluding fresh cut flowers or consignment items)
352 Clark Ave N, Kelliher
(218) 647-9829
www.bzfloral.com

Buena Vista Ski Area

10% off regular-priced lift tickets
(Not valid on Fridays or with other offers)
19600 Irvine Ave NW, Bemidji
(218) 243-2231
www.bvskiarea.com

Cass Metal Craft, Inc.

Free consultations on all stair & railing projects;
10% off all welding repairs
6511 160th St N, Cass Lake
(218) 335-2336
www.cassmetalcraft.com

Compass Rose

10% off regular priced items
(not valid with other discounts)
108 3rd St NW, Bemidji
(218) 556-4183
www.compass-rose.com

Country Kitchen of Bemidji

10% off ticket
728 Paul Bunyan Dr NW, Bemidji
(218) 444-8963
www.countrykitchenrestaurants.com

Culligan of Bemidji

First 30 days-FREE cooler rental and 4 FREE bottles of water with signed 6-month delivery agreement
1400 Neilson Ave SE, Bemidji
(218) 751-2651
www.culliganwater.com

Dairy Queen - Lakeside

Buy 1 small blizzard, get 1 small blizzard for 99¢
700 Paul Bunyan Dr S, Bemidji
(218) 444-2108

Darrell's Auto Glass

10% off windshield replacement
2035 Adams Ave NW, Bemidji
(218) 759-8810
www.darrellsautoglass.com

Dunn Bros Coffee

10% off all beverage purchases
501 Paul Bunyan Dr S, Bemidji
(218) 444-5252
www.dunnbros.com

Ecowater Systems

10% off purchase plus FREE installation of all residential water conditioning equipment
3940 Minnkota Ave NW, Bemidji
(218) 759-0047
www.ecowater.com

Frizzell Furniture Gallery

FREE set of Malouf microfiber sheets with the purchase of a mattress set
123 Beltrami Ave NW, Bemidji
(218) 444-5000
www.frizzellfurniture.com

Gallery North

\$5 off \$25 purchase
310 4th St NW, Bemidji
(218) 444-9813
www.gallerynorthbemidji.com

Gifts O' the Wild

10% off total purchase
(not valid with any other offer or coupon)
7 miles south of Bemidji on US 71
(218) 751-4914

Headwaters Science Center

Receive 1 free child admission with the purchase of 1 adult admission
413 Beltrami Ave NW, Bemidji
(218) 444-4472
www.hscbemidji.org

Image Photography and Framing

5% off in-studio portraits, 5% off framing, 5% off picture custom frames
1305 Bemidji Ave, Bemidji
(218) 751-8308
www.imagebj.com

Keith's Pizza, Inc.

\$2 off any large or extra large pizza (not valid with other discounts, offers or unbaked pizzas)
South: 110 Paul Bunyan Dr S, Bemidji
(218) 444-7940
North: 1425 Paul Bunyan Dr NW, Bemidji
(218) 444-7941
www.keithspizza.com

Ken K. Thompson Jewelry

20% discount on all regular-price jewelry & gifts
(not valid on repairs or prior layaways)
1080 Paul Bunyan Dr NW, Bemidji
(218) 751-1433
www.kenkthompsonjewelry.com

Want Your

Business Offer Here?

Contact Angela Lyseng at 218-444-3689 or email alyseng@beltramielc.com to find out more information.

Lakes Area Powersports

Additional 10% off in-stock parts, accessories & clothing
8322 State 371 NW, Walker
(218) 547-1558
www.lakesareapowersports.com

Midnight Sun Pools 'n' Spas

10% off chemicals
3411 Hannah Ave NW, Bemidji
(218) 759-8518
www.mnspas.com

MJB Home Center

Free hoses or cords with any new washer, dryer or range purchase
418 Beltrami Ave, Bemidji
(218) 751-2420
www.mjbhomecenter.com

Northern Event Rentals

10% discount on any table or chair rental
3859 Cornflower Ct SE, Bemidji
(218) 209-6160
www.northerneventrentals.com

Northwest Tire

\$5 off oil change, \$20 off brake service, \$25 off 4-tire purchase
402 Paul Bunyan Dr SE, Bemidji
(218) 444-8696
www.nwtire.com

Northwoods Habitat for Humanity ReStore

5% off total sale (not valid with other discounts)
1357 Industrial Park Dr SE, Bemidji
(218) 444-6398
www.habitatbemidji.org

Orton's Station Stores:

Bemidji Cenex, Cass Lake Cenex, Walker Cenex, Y-Mart Cenex
5¢ off per gallon of gasoline
(218) 547-1719
www.ortonoilco.com

Papa Murphy's

\$3 off any pizza, any size - no limit (not valid with other offers)
512 Paul Bunyan Dr NW, Bemidji
(218) 444-7025
www.papamurphysbemidji.com

Per Mar Security Services

Free Skybell video doorbell with purchase of new security system
3501 Laurel Dr NW, Bemidji
(218) 444-3902
www.permarsecurity.com

Pete's Place South

5¢ off per gallon of gasoline
179 Convenience Lane SW, Bemidji
(218) 751-9255

Petro Serve USA

5¢ off per gallon of gasoline
2470 Paul Bunyan Dr NW, Bemidji
(218) 751-8518
www.petroserveusa.com

Download the mobile app.
Take savings with you wherever you go.

Royal Shooks Motel
10% discount Tuesdays and Wednesdays
35241 Hwy 72 NE, Northome
(218) 647-8379 or Toll Free 888-921-5222
www.royalshooksmotel.com

SND Appliances
2% off purchase
3481 Laurel Dr NW, Bemidji
(218) 444-6577 or (218) 556-1979
www.bemidjisnd.com

Stittsworth Meats
5% off total order
722 Paul Bunyan Dr NW, Bemidji
(218) 751-1320
www.stittsworthmeats.com

Timberline Sports 'n' Convenience
Save 10% on select gun accessories with
purchase of firearm
209 Summit Ave W, Blackduck
(218) 835-4636

Wilkening Fireplace Company
20% off installation or service
9608 State 371 NW, Walker
(218) 547-3393 or (800) 367-7976
www.wilkeningfireplace.biz



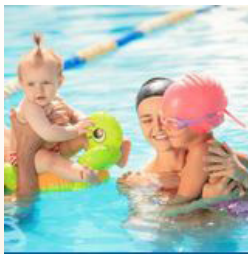
Lost your Co-op Connections® Card?

Don't worry! Simply call Beltrami Electric Cooperative at 218-444-2540 or 800-955-6083 for a replacement card or stop in to our office and keep the savings coming! Or download the FREE app to your mobile phone and always have your card and the savings right at your fingertips!

CO-OP CONNECTIONS® : THE ONE CARD THAT DOES IT ALL



Cashback



Family Fun



Groceries



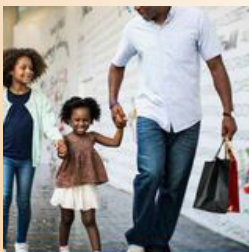
Healthy Savings



Insurance



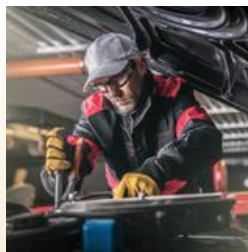
Movie Tickets



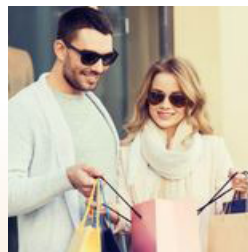
National Discounts



Restaurants



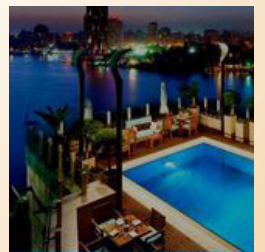
Services



Shopping



Tickets



Travel



Touchstone Energy®
Cooperatives

The power of human connections®

CLASSIFIEDS

Classified ads rules

- Ads are due by the first of the month prior to publication of the next issue. Example:
 - o Ads submitted by March 1 will be published in the April issue.
 - o Ads submitted between March 2 and April 1 will be published in the May issue.
- Ads may be submitted via our website at www.beltramielc.com (preferred).
- Include your name and Beltrami Electric account number on all submissions.
- All ads must be **50 words or fewer** and typed or printed clearly.
- Members may only submit one for sale and one wanted or free ad per issue.
- No real estate, rental, personal or commercial ads will be accepted.
- Ads are published at no charge as space permits on a first-received, first-printed basis, **with no guarantee your ad will appear.**
- Ads are only allowed to be repeated for **three consecutive months** and must be resubmitted each month.
- Editor reserves the right to edit or reject any ad.
- All telephone numbers are presumed to have a 218 area code unless otherwise noted.
- Mail ads to: Beltrami Electric Cooperative, P.O. BOX 488, Bemidji, MN 56619.

For Sale:

2017 Sun Tracker Fishin' 22' DLX Barge pontoon, excellent condition, always under cover. 115 hp four-stroke Mercury engine, double-axle Sun Tracker pontoon trailer. Less than 40 hours on motor and less than 15 miles on the trailer. A complete package. \$24,000. 651-470-1890.
LeCube Nespresso machine. Used twice. \$50.
Metal crib, \$40. Could be made into daybed. 444-9137.

"Elite Billiards" solid oak 4'x8' pool table,

wine colored cloth, excellent condition, asking \$1,100/obo. Call 760-8266 for more info or we can send photos.

Dishwasher for sale. Works well. White \$25, you haul. 444-6509.

12-ft fiberglass extension ladder, \$50. 335-6882.

2014 5th wheel, Cougar High Country 333mks, 3 slides, electric jacks, dinette w/4 chairs, 2 rocker-recliners, 36 feet long, wheel covers + extras. \$23,900. 368-1262.

Picture of a dressed up older Norwegian lady, in an older 29 x 25 inch frame. \$100/obo. 751-3632.

2013 Red Dodge Grand Caravan, 115K miles, newer tires, beautiful van, runs and drives great, no issues. \$7,900/obo. Call 766-1095 for a test drive.

Dog sled with 2 X-back harnesses. Made of white ash, has claw brake, runners, brush bow and handlebar made of high-density polyethylene. Lightweight and in great condition. 22' neck harnesses fit dogs approx. 50-70 lbs. and handle 1-8 dogs, \$400. Call 209-5339.

Matching ski/snowboard Billabong ski jacket and ski snow pants, size small, excellent condition, worn 3-4 times, \$175. Four beautiful prom dresses, size 6, colors of red, brown, shades of pastel and candy apple red, \$25 each. 751-9357.

Pelican Colorado 15-ft poly canoe, \$300. Black Itech hockey bag, \$50. Armstrong flute, \$200. Tri-Tronics dog training collar, \$100. Horse statues and plates, call for info. Diamond Razor Edge compound bow with accessories, \$350. 759-0186.

Remington 700 ADL 30-06 rifle and Tasco scope. Great shape. Rifle made in 1976, \$550. Remington 742 BDL 30-06 rifle and Bushnell scope. Great shape, \$450. 612-718-6721.

Engage/Wedding set, YG, 1/4 ct round diamond surrounded by 5 dk blue sapphires. Matching men's YG band w/small diamond and 2 sapphires, \$695. Homak 10-gun safe, 10 min. fire rating, \$75/obo. 586-2534.

AKC Registered Labrador Retriever puppies. Puppies come from excellent hunting bloodlines. Parents are health tested and OFA com-

pleted. Hips are excellent and elbows normal on both parents. \$750 limited registration, an additional \$200 for full registration. Text or call 244-7605 for more information.

4'x10' aluminum dock section. New in box. Regular price \$799, asking \$375/obo. Call 760-8266.

Maple china cabinet and matching dining table with 8 chairs. \$500. 444-3283.

Oak hutch, 76" H x 48" W x 18"D. Leaded glass in upper doors, excellent condition, \$175. Beautiful old punch bowl, looks like cut glass, holds six quarts, includes 38 cups and ladle, \$25. 835-6247.

Block, Crazy, Star quilts. Twin, \$35, full, \$40, queen, \$55, king, \$60. Sewing machines, \$15 each. 243-2702.

Like new, queen-size hide-a-bed, brown, 3-cushion seat, matching extra cushions, \$400. Like new La-Z-Boy recliner, tan, \$200. New-in-box: 44-gallon water works tank for well, max 100 PSI rating, vertical pressurized, \$300. 444-8747.

King-size bed: mattress, box spring and frame, great shape, downsizing. \$250. 766-8781.

Kirsch window treatments. Qty: 16. Size: 2" horizontal wood blinds, various width and 59" long (length can be made shorter), can be mounted inside or outside window frame, cedar tone finish, like new, \$30 each or \$420 for all of them. Call for details. 763-760-3081 or 763-229-0852.

Wanted:

Outdoor large Santa, plastic, electric and good condition. 759-4734.

Used 26-inch snowblower, 2-stage, 8 hp. 206-5391.

Free:

Double bed mattress and box spring in very good condition. Very clean, no stains, no bugs, you haul. Please call 444-6509.

Lumberjack 2013 yearbook. No writing in the yearbook. 444-6165.

BOARD MEETING HIGHLIGHTS

Beltrami Electric's board of directors conducted its regular monthly meeting Wednesday, Jan. 29, 2020. A quorum of directors was present.

The following reports were given:

- President and CEO Echternach gave his monthly report, including a review of 2019 accomplishments and legislative issues.
- Arlene Hogquist reviewed the November and December financial reports.
- Sam Mason reviewed the annual cogeneration report and associated filings and also reported on the key accounts of the cooperative.
- President and CEO Echternach and Sam Mason discussed the 2020 BEC annual meeting.
- CEO Echternach presented a proposed amendment to the bylaws of Operation Round Up®.
- Directors and the CEO shared highlights of meetings attended on behalf of the cooperative and discussed upcoming meetings and educational conferences.

The following actions were taken:

- Approved the consent agenda.
- Approved the annual cogeneration report and associated filings as presented.
- Approved moving the BEC annual meeting to Wednesday, Aug. 12, 2020, at the Beltrami County Fairgrounds.
- Approved the amended Operation Round Up bylaws.
- Approved moving the April regular board meeting to April 23, 2020.

The next regular board meeting will be Wednesday, March 25, 2020.

BELTRAMI ELECTRIC'S INDOOR GARAGE SALE TO BENEFIT

United Way
of Bemidji Area



Saturday, May 2, 2020!

Booth reservations for vendors will be open on Thursday, March 26, and will be accepted until all 91 booths have been filled. If interested, come in to our office at 4111 Technology Dr. NW in Bemidji and sign up or contact Cammie at 218-444-3675 or cvogel@beltramielc.com.

Grant Application Deadline March 27, 2020

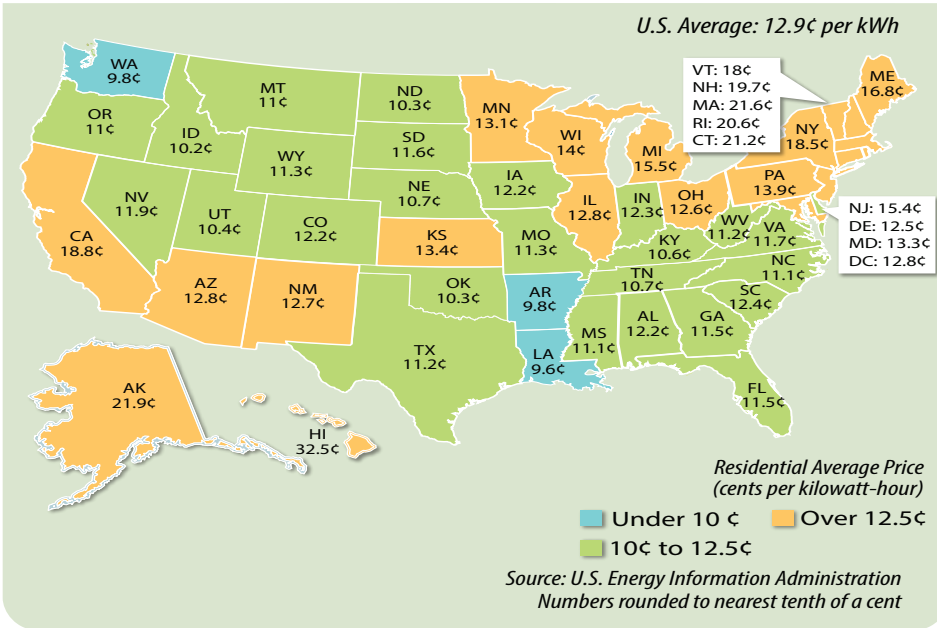


To be considered at the April 2020 meeting, grant applications must be received by **Friday, March 27**. Community organizations and nonprofit groups may apply for an Operation Round Up® grant by completing and returning an application form. Grant applications and requirements are available at the BEC office or by visiting our website at www.beltramielc.com.

In January, the Beltrami Electric Cooperative board of directors passed a bylaw amendment to distribute Operation Round Up funds semi-annually rather than quarterly. Application deadlines for 2020 will be **March 27, 2020**, and **September 25, 2020**.

Average Prices for Residential Electricity

2018 figures, in cents per kWh



Need help paying your electric bill?

The Energy Assistance Program (EAP) helps pay for home heating costs and furnace repairs for income-qualified households. We urge you to contact them immediately to avoid disconnection if you feel you are eligible for aid. (Eligibility is based on energy costs, household size and the three most recent months of income.)

Are you a senior living on a fixed income or suffering from a temporary financial shortfall? Then the following agencies may be able to assist you with your electric bill.

Bi-CAP

6603 Bemidji Ave N, Bemidji, MN 56601
218-751-4631

Kootasca

201 NW 4th St., Suite 130,
Grand Rapids, MN 55744
218-999-0800

Leech Lake

115 6th St., Cass Lake, MN 56633
218-335-3783

Mahube

120 North Central Ave,
Park Rapids, MN 56470
218-732-7204

Red Lake

15525 Mendota Ave, Redby, MN 56670
218-679-3350

EAP services may include: payment of energy bills, help with utility disconnections or fuel deliveries, repair or replacement of homeowner's broken heating systems, energy efficiency and more.

2020 EAP Income Guidelines

Household Size	3-month Maximum	Household Size	3-month Maximum
1	\$6,761	5	\$15,084
2	\$8,842	6	\$17,164
3	\$10,923	7	\$17,554
4	\$13,003	8	\$17,944

Visit <https://mn.gov/commerce/consumers/consumer-assistance/energy-assistance/> for more EAP income guidelines and program information.



The PERFECT POWER PICK for your home

You're newlyweds building a new house – choose an **air-source heat pump**.

Whether you've been married three weeks or 30 years, build your new love nest with the flexibility, efficiency and ease of an air-source heat pump system.

Contact the energy experts at Beltrami Electric to find the perfect power pick for your space.

218-444-2540 or 1-800-955-6083
www.beltramielectric.com

Between \$450/ton-\$650/ton in rebates available!
(dependent on SEER rating)



AIR-SOURCE HEAT PUMP

- Sized to meet the heating and cooling needs of any home
- Moves heat instead of generating it like a less efficient fuel furnace
- Keeps air fresh and dehumidified
- Easily installed with minimal maintenance
- Qualifies for super-low off-peak electricity rate



Beltrami Electric Cooperative Inc.

Your Touchstone Energy® Cooperative 

4111 Technology DR NW
PO Box 488
Bemidji, MN 56619-0488
218-444-2540 • 800-955-6083
www.beltramielectric.com

A DOWNED LINE ALWAYS MEANS DANGER



If you see a downed power line after a bad storm or at an accident scene, NEVER get out to help or go near the downed line.

Always assume a downed power line is energized and deadly. This also applies to any electrical equipment, including pad-mounted transformers (“green boxes”) or other utility cabinets or fenced substations.

If you are involved in an accident or snarl with a

downed line or other utility equipment – whether in a car, tractor or any other type of vehicle or equipment – do not get out. If you exit the vehicle and walk away, you could be electrocuted. Instead, call 9-1-1 and wait for the utility to arrive to cut the power.

If you must leave a vehicle due to smoke or fire, make a solid jump out with your feet together and without touching the car or truck, and then hop (making sure both feet land at the same time) — DO NOT WALK — at least 30 feet to safety. If you hop, you are less likely to enter two different voltages of electricity at the same time, which causes shock and electrocution.

For more information about electrical safety, visit SafeElectricity.org.

Notice to cogenerators

In compliance with Beltrami Electric Cooperative adopted rules relating to cogeneration and small power production, Beltrami Electric Cooperative is obligated to interconnect with and purchase electricity from cogenerators and small power producers who satisfy the conditions as a qualifying facility. Beltrami Electric Cooperative is obligated to provide information free of charge to all interested members upon request regarding rate and interconnection requirements. All interconnections require an application and approval to become a qualifying facility.

Any dispute over interconnections, sales and purchases are subject to resolution by Beltrami Electric Cooperative Board. **Interested members should contact Beltrami Electric Cooperative, 4111 Technology Dr NW, PO Box 488, Bemidji, MN 56601 or call 218-444-2540.**

2020 BELTRAMI ELECTRIC DISTRICT MEETINGS

DATE	TIME	LOCATION	DISTRICT
Tuesday, June 23, 2020	7:00 p.m.	Beltrami Electric Co-op (Community Room) 4111 Technology Drive NW, Bemidji, Minn.	District 6
Wednesday, June 24, 2020	7:00 p.m.	Blackduck Senior Center 24 1 st Street SE, Blackduck, Minn.	District 4
Thursday, June 25, 2020	7:00 p.m.	Red Lake Nation College (Student Union) 15480 Migizi Drive, Red Lake, Minn.	District 2